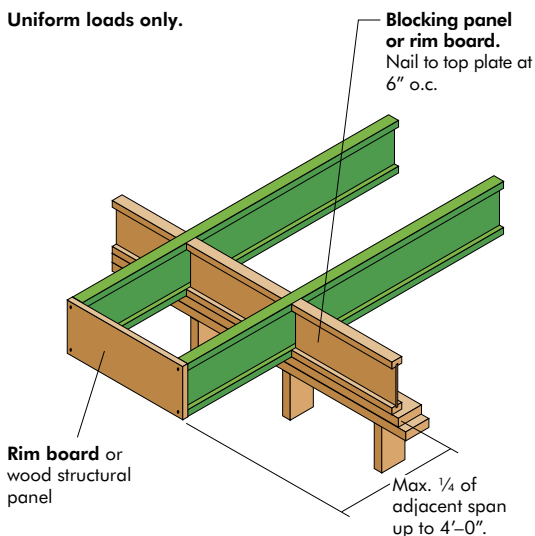


CANTILEVER DETAILS AND REINFORCEMENT

F12 INTERIOR BALCONY

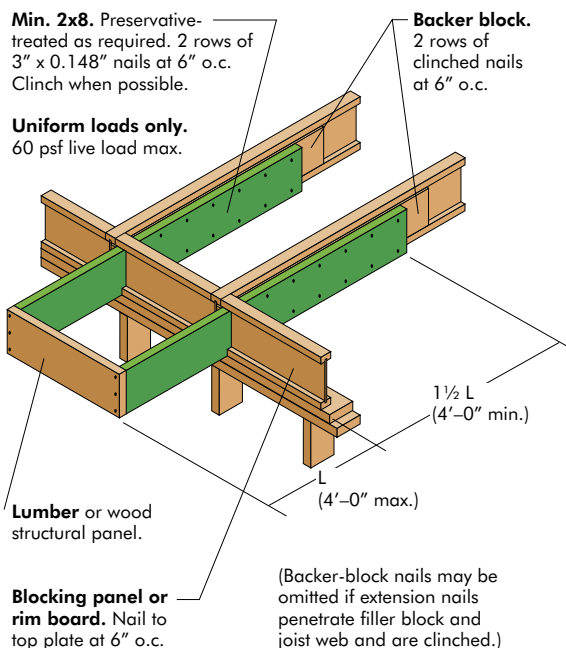
Uniform loads only.



F13 EXTERIOR BALCONY

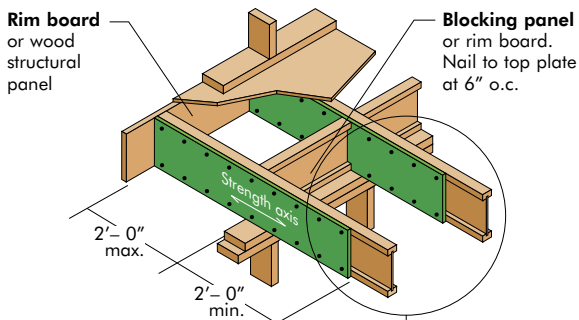
Min. 2x8. Preservative-treated as required. 2 rows of 3" x 0.148" nails at 6" o.c. Clinch when possible.

Uniform loads only.
60 psf live load max.



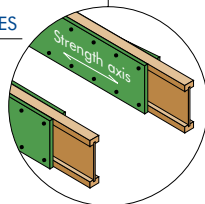
F14 REINFORCED CANTILEVER

Method 1—SHEATHING ONE SIDE



Method 2—SHEATHING TWO SIDES

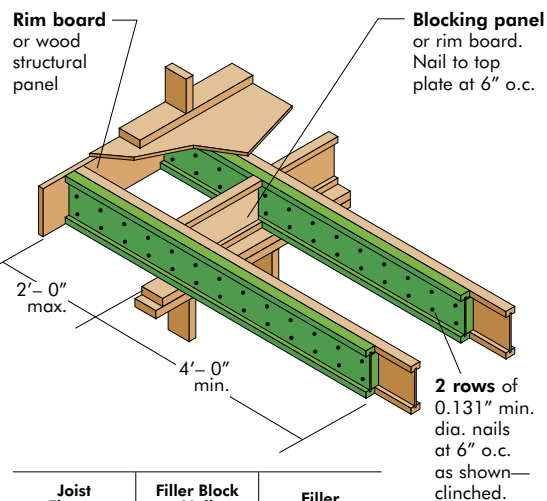
Stagger nails from opposite sides to avoid flange splitting.



Method 1 and 2: Min. 23/32" sheathing-grade panels. Strength axis parallel to joist length. Reinforcement depth = joist depth. Nail to flanges at 6" o.c.

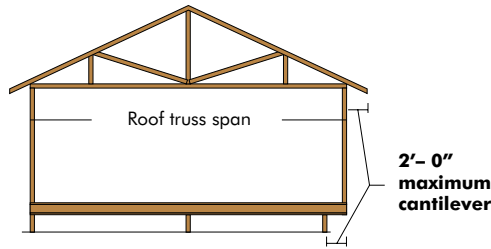
F15 REINFORCED CANTILEVER

Alternate Method 2—I-JOIST ONE SIDE



Joist Flange Width	Filler Block Nail Length	Filler Thickness
1 1/2"	2 1/2" min.	1 1/8" or 1 1/4"
1 3/4"	3" min.	1 1/2"
2 3/16"	3 1/4" min.	2"
2 1/2"	3 1/2" min.	2" or 2 1/4"
3 1/2"	3" min, each side	3"

CANTILEVER REINFORCEMENT



JOISTS WITH 3/8" WEBS

Roof Truss		9 1/2" Joist				11 7/8" Joist				14" Joist				16" Joist			
Load	Span (ft)	12" o.c.	16" o.c.	19.2" o.c.	24" o.c.	12" o.c.	16" o.c.	19.2" o.c.	24" o.c.	12" o.c.	16" o.c.	19.2" o.c.	24" o.c.	12" o.c.	16" o.c.	19.2" o.c.	24" o.c.
35 psf Total Load (115%)	26	0	0	0	1	0	0	1	1	0	0	0	1	0	0	0	1
	28	0	0	1	1	0	0	1	1	0	0	0	1	0	0	0	1
	30	0	0	1	1	0	0	1	1	0	0	0	1	0	0	0	1
	32	0	0	1	2	0	0	1	1	0	0	0	1	0	0	1	1
	34	0	0	1	2	0	0	1	1	0	0	1	1	0	0	1	1
	36	0	0	1	2	0	1	1	1	0	0	1	1	0	0	1	1
	38	0	0	1	2	0	1	1	2	0	0	1	1	0	0	1	1
	40	0	1	1	X	0	1	1	2	0	0	1	1	0	0	1	1
	42	0	1	2	X	0	1	1	2	0	0	1	1	0	0	1	1
	42	0	1	2	X	0	1	1	2	0	0	1	1	0	0	1	1
45 psf Total Load (115%)	26	0	0	1	2	0	0	1	1	0	0	1	1	0	0	1	1
	28	0	0	1	2	0	1	1	2	0	0	1	1	0	0	1	1
	30	0	1	1	X	0	1	1	2	0	0	1	1	0	0	1	1
	32	0	1	2	X	0	1	1	2	0	0	1	1	0	0	1	1
	34	0	1	2	X	0	1	1	2	0	0	1	2	0	0	1	2
	36	0	1	2	X	0	1	1	2	0	1	1	2	0	1	1	2
	38	0	1	2	X	0	1	1	2	0	1	1	2	0	1	1	2
	40	0	1	2	X	0	1	1	2	0	1	1	2	0	1	1	2
	42	0	2	X	X	0	1	2	2	0	1	1	2	0	1	1	2
	42	0	2	X	X	0	1	2	2	0	1	1	2	0	1	1	2
55 psf Total Load (115%)	26	0	1	2	X	0	1	1	2	0	0	1	1	0	0	1	2
	28	0	1	2	X	0	1	1	2	0	1	1	2	0	1	1	2
	30	0	1	2	X	0	1	1	2	0	1	1	2	0	1	1	2
	32	0	1	2	X	0	1	1	2	0	1	1	2	0	1	1	2
	34	0	2	X	X	0	1	2	2	0	1	1	2	0	1	1	2
	36	1	2	X	X	1	1	2	X	0	1	1	2	0	1	1	2
	38	1	2	X	X	1	1	2	X	0	1	1	2	0	1	2	2
	40	1	2	X	X	1	1	2	X	0	1	2	2	0	1	2	2
	42	1	X	X	X	1	1	2	X	0	1	2	X	0	1	2	X
	42	1	X	X	X	1	1	2	X	0	1	2	X	0	1	2	X

JOISTS WITH 7/16" WEBS

Roof Truss		9 1/2" Joist				11 7/8" Joist				14" Joist				16" Joist			
Load	Span (ft)	12" o.c.	16" o.c.	19.2" o.c.	24" o.c.	12" o.c.	16" o.c.	19.2" o.c.	24" o.c.	12" o.c.	16" o.c.	19.2" o.c.	24" o.c.	12" o.c.	16" o.c.	19.2" o.c.	24" o.c.
35 psf Total Load (115%)	26	0	0	0	0	0	0	0	0	0	0	0	0	0	0	0	0
	28	0	0	0	0	0	0	0	0	0	0	0	0	0	0	0	0
	30	0	0	0	0	0	0	0	0	0	0	0	0	0	0	0	0
	32	0	0	0	1	0	0	0	0	0	0	0	0	0	0	0	0
	34	0	0	0	1	0	0	0	0	0	0	0	0	0	0	0	0
	36	0	0	0	1	0	0	0	0	0	0	0	0	0	0	0	WS
	38	0	0	0	1	0	0	0	0	0	0	0	WS	0	0	0	WS
	40	0	0	0	1	0	0	0	WS	0	0	0	WS	0	0	0	WS
	42	0	0	0	2	0	0	0	WS	0	0	0	WS	0	0	0	WS
	42	0	0	0	1	0	0	0	0	0	0	0	0	0	0	0	0
45 psf Total Load (115%)	26	0	0	0	1	0	0	0	0	0	0	0	0	0	0	0	0
	28	0	0	0	1	0	0	0	0	0	0	0	0	0	0	0	WS
	30	0	0	0	1	0	0	0	WS	0	0	0	WS	0	0	0	WS
	32	0	0	0	2	0	0	0	WS	0	0	0	WS	0	0	0	WS
	34	0	0	1	2	0	0	0	WS	0	0	0	WS	0	0	0	WS
	36	0	0	1	2	0	0	0	WS	0	0	0	WS	0	0	0	1
	38	0	0	1	X	0	0	0	1	0	0	0	1	0	0	0	1
	40	0	0	1	X	0	0	0	1	0	0	0	1	0	0	0	1
	42	0	1	2	X	0	0	0	1	0	0	WS	1	0	0	WS	1
	42	0	1	2	X	0	0	0	1	0	0	WS	1	0	0	WS	1
55 psf Total Load (115%)	26	0	0	0	2	0	0	0	WS	0	0	0	WS	0	0	0	WS
	28	0	0	1	2	0	0	0	WS	0	0	0	WS	0	0	0	1
	30	0	0	1	X	0	0	0	1	0	0	0	1	0	0	0	1
	32	0	0	1	X	0	0	0	1	0	0	0	1	0	0	WS	1
	34	0	1	2	X	0	0	0	1	0	0	WS	1	0	0	WS	1
	36	0	1	2	X	0	0	WS	1	0	0	WS	1	0	0	WS	1
	38	0	1	2	X	0	0	WS	2	0	0	WS	2	0	0	WS	2
	40	0	1	2	X	0	0	1	2	0	0	1	2	0	0	1	2
	42	0	1	X	X	0	0	1	2	0	0	1	2	0	0	1	2
	42	0	1	X	X	0	0	1	2	0	0	1	2	0	0	1	2

Notes:

- 0 = No reinforcement and no web stiffeners are required.
- WS = Web stiffeners are required at the support. Follow the intermediate support web stiffener nailing requirements on page 81.
- 1 = Reinforcer required on one side of the cantilever. See the Method 1 detail on page 78.
- 2 = Reinforcers required on both sides of the cantilever. See the Method 2 or Alternate Method 2 detail on page 78.
- X = Consider deeper joists or closer spacing.

Table values apply to joists sized by means of the 10 psf dead load allowable residential floor spans tables and are based on uniform loads across the ends of the cantilevers that include a 15 psf roof dead load and a 100 plf exterior wall load. Uniform loading may be assumed when window and door openings are up to three feet wide and spaced at least three feet apart. Otherwise, consider the need for extra joists under the window and door header jack studs.

Use sizing software or consult a professional engineer for conditions beyond the scope of this table.