



LISTING INFORMATION OF Pacific Woodtech PWI Wood I-Joists

SPEC ID: Pacific Woodtech Wood I-Joist

Pacific Woodtech Corporation
1850 Park Lane
PO Box 465
Burlington, WA 98233

This report is for the exclusive use of Intertek's Client and is provided pursuant to the agreement between Intertek and its Client. Intertek's responsibility and liability are limited to the terms and conditions of the agreement. Intertek assumes no liability to any party, other than to the Client in accordance with the agreement, for any loss, expense or damage occasioned by the use of this report. Only the Client is authorized to permit copying or distribution of this report and then only in its entirety. Any use of the Intertek name or one of its marks for the sale or advertisement of the tested material, product or service must first be approved in writing by Intertek. The observations and test results in this report are relevant only to the sample tested. This report by itself does not imply that the material, product, or service is or has ever been under an Intertek certification program.

Structural Members for use in Fire Rated floor/ceiling assemblies;

Joist Series	Joist Depth		Flange			Web	
	Min.	Max.	Thick.	Width	Material	Thickness	Material
PWI 20	9-1/2"	14"	1-3/8"	1-3/4"	PW LVL	3/8"	OSB
PWI 30	9-1/2"	11-7/8"	1-1/2"	1-1/2"	PW LVL	3/8"	OSB
PWI 40	9-1/2"	16"	1-3/8"	2-5/16"	PW LVL	3/8"	OSB
PWI 45	9-1/2"	16"	1-3/8"	2-1/16"	PW LVL	3/8"	OSB
PWI 50	9-1/2"	16"	1-1/2"	1-3/4"	PW LVL	3/8"	OSB
PWI 60	9-1/2"	16"	1-3/8"	2-5/16"	PW LVL	3/8"	OSB
PWI 70	11-7/8"	20"	1-1/2"	2-5/16"	PW LVL	3/8"	OSB
PWI 93	11-7/8"	16"	1-1/2"	3-1/2"	PW LVL	3/8"	OSB
PWI 77	9-1/2"	24"	1-1/2"	2-5/16"	PW LVL	7/16"	OSB
PWI 90	9-1/2"	24"	1-1/2"	3-1/2"	PW LVL	7/16"	OSB

See Enclosed Listing Designs

<u>Attribute</u>	<u>Value</u>
CSI Code	06 17 00 Shop-Fabricated Structural Wood
Fire Resistance	2 Hour Fire Rated
Fire Resistance	1 Hour Fire Rating
Fire Resistance	90 Minute Fire Rated
Fire Resistance	45 Minute Fire Rated
Listed or Inspected	LISTED
Report Number	3184537COQ-004
Criteria	CAN / ULC S101 (2007)
Criteria	ASTM E119 (2008a)
Intertek Services	Certification
Listing Section	PREFABRICATED JOISTS
Listing Section	ROOF/CEILING, FLOOR/CEILING, BEAM & COLUMN ASSEMBLIES
Test Original Issue Date	3184537COQ-004 July 2009

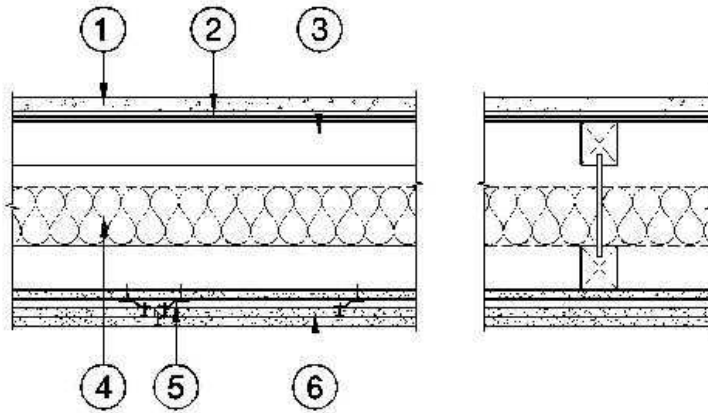
DRAWING INDEX

Design Listing PWT WIJ 120-01
Design Listing PWT WIJ 45-01
Design Listing PWT WIJ 60-01
Design Listing PWT WIJ 60-02
Design Listing PWT WIJ 60-03
Design Listing PWT WIJ 60-04

Design Listing PWT WIJ 120-01

CSI Code 06 17 00
CSI Code 06 17 33

DESIGN NO. PWT/WIJ 120-01
ASSEMBLY RATING: 120 MINUTES
FLOOR/CEILING ASSEMBLY

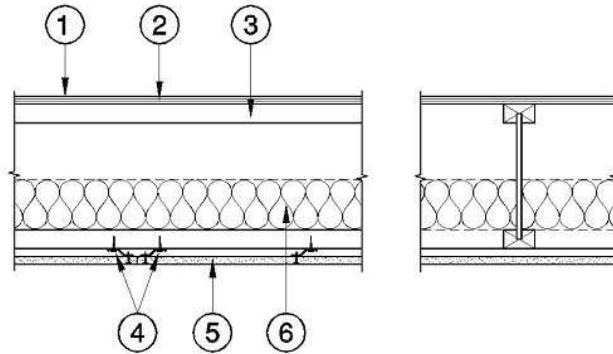


1.	Topping (Optional): Lightweight concrete or proprietary topping.
2.	Sub-Flooring: Minimum 5/8 in. plywood or oriented strandboard (OSB). Sub-flooring installed perpendicular to joists, with end joints staggered, fastened in accordance with Code requirements.
3.	Structural Members: Pacific Woodtech Corporation PWC Series I-joists having a minimum depth of 9 1/2 in., installed at 24 in. on centers maximum.
4.	Insulation (Optional): Max. 6 in. fiberglass or rockwool batt insulation, friction fit between webs, and supported using wires every 16 in..
5.	Resilient Channels: Minimum 25 gauge galvanized steel resilient channels installed perpendicular to joists and spaced 16 in. on centers maximum. Additional channels required at gypsum wallboard end joints such that each board end rests on its own channel. These additional channels shall extend to the next joist on each side of the board edges. Channels fastened with two 1-5/8 in. long Type S screws at each joist intersection.
6.	Gypsum Board: Three layers of 5/8 in. Type C gypsum wallboard. Base layer applied directly to joists, installed with long dimensions perpendicular to joists with end joints butted over joists and staggered 24 in. minimum. Base layer fastened with 1-5/8 in. Type S screws, spaced 12 in. on centers at the joints and in the field. Middle and Face layer installed over channels with long dimension perpendicular to resilient channels and edges, staggered 24 in. from base layer end joints. Middle layer fastened with 1 in. Type S screws located 12 in. on centers at the joints and in the field. Face layer fastened with 1-7/8 in. Type S screws are placed 8 in. on centers at joints and in the field. (Screw lengths are minimums).

Design Listing PWT WIJ 45-01

CSI Code 06 17 00
CSI Code 06 17 33

DESIGN NO. PWT/WIJ 45-01
ASSEMBLY RATING: 45 MINUTES
FLOOR/CEILING ASSEMBLY

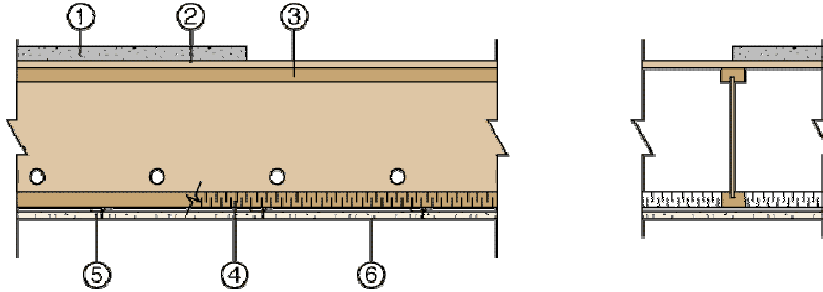


1.	Topping (Optional): Lightweight concrete or proprietary topping.
2.	Sub-Flooring: Minimum 5/8 in. plywood or oriented strandboard (OSB). Sub-flooring installed perpendicular to joists, with end joints staggered, fastened in accordance with Code requirements.
3.	Structural Members: Pacific Woodtech Corporation PWI Series I-joists having a minimum depth of 9 1/2 in., installed at 24 in. on centers maximum.
4.	Resilient Channels: Minimum 25 gauge galvanized steel channels installed perpendicular to joists and spaced 16 in. on centers maximum. Additional channels required at gypsum wallboard end joints such that each board end rests on its own channel. These additional channels shall extend to the next joist on each side of the board edges. Channels fastened with 1-5/8 in. long Type W screws at each joist intersection.
5.	Gypsum Board: One layer of 5/8 in. Type C gypsum wallboard installed perpendicular to channels with end joints staggered 48 in. Boards to be fastened to channels with minimum 1 1/8 in. Type S screws located 7 in. on center. Screws shall be minimum 1 1/2 in. from board edges and 3/4 in. from board ends. Gypsum wallboard shall be taped and filled. Screw heads shall be filled with gypsum joint compound.
6.	Insulation (Optional): Maximum 3-1/2 in. fiberglass batt insulation or 2 in. rock wool insulation, nominal 2.5 pcf density, friction fit between flanges.

Design Listing PWT WIJ 60-01

CSI Code 06 17 00
CSI Code 06 17 33

DESIGN NO. PWT/WIJ 60-01
ASSEMBLY RATING: 60 MINUTES
FLOOR/CEILING ASSEMBLY

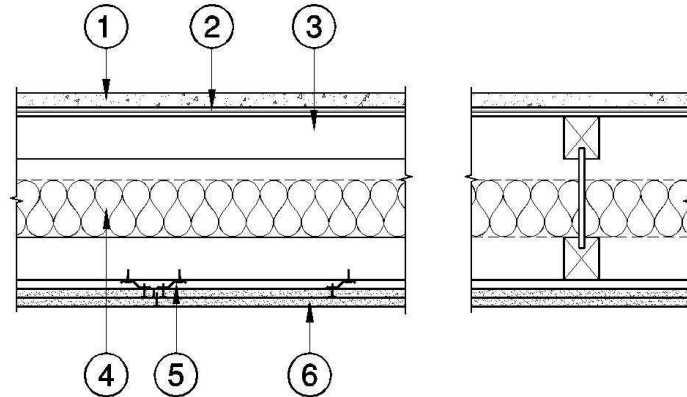


1.	Topping (Optional): Lightweight concrete or proprietary topping.
2.	Sub-Flooring: Minimum 5/8 in. plywood or oriented strandboard (OSB). Sub-flooring installed perpendicular to joists, with end joints staggered, fastened in accordance with Code requirements.
3.	Structural Members: Pacific Woodtech Corporation PWI Series I-joists having a minimum depth of 9 1/2 in., installed at 24 in. on centers maximum.
4.	Insulation: 1-1/2 in. rock wool insulation, nominal 2.5 pcf density, friction fit between flanges.
5.	Resilient Channels: Minimum 25 gauge galvanized steel channels installed perpendicular to joists and spaced 16 in. on centers maximum. Additional channels required at gypsum wallboard end joints such that each board end rests on its own channel. These additional channels shall extend to the next joist on each side of the board edges. Channels fastened with 1-5/8 in. long Type W screws at each joist intersection.
6.	Gypsum Board: One layer of 5/8 in. Type C gypsum wallboard installed perpendicular to channels with end joints staggered 48 in. Boards to be fastened to channels with minimum 1 1/8 in. Type S screws located 7 in. on center. Screws shall be minimum 1 1/2 in. from board edges and 3/4 in. from board ends. Gypsum wallboard shall be taped and filled. Screw heads shall be filled with gypsum joint compound.

Design Listing PWT WIJ 60-02

CSI Code 06 17 00
CSI Code 06 17 33

DESIGN NO. PWT/WIJ 60-02
ASSEMBLY RATING: 60 MINUTES
FLOOR/CEILING ASSEMBLY

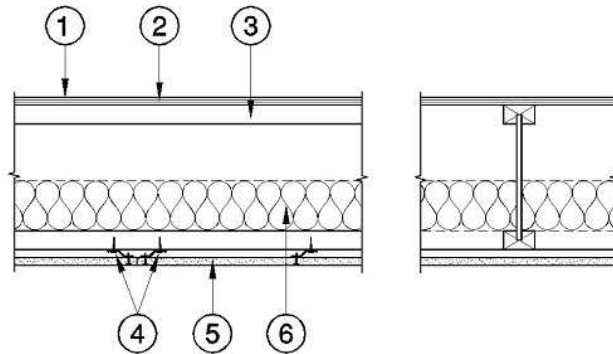


1.	Topping (Optional): Lightweight concrete or proprietary topping.
2.	Sub-Flooring: Minimum 5/8 in. plywood or oriented strandboard (OSB). Sub-flooring installed perpendicular to joists, with end joints staggered, fastened in accordance with Code requirements.
3.	Structural Members: Pacific Woodtech Corporation PWI Series I-joists having a minimum depth of 9 1/2 in., installed at 24 in. on centers maximum.
4.	Insulation (Optional): Maximum 3-1/2 in. fiberglass batt insulation, friction fit between flanges or webs.
5.	Resilient Channels: Minimum 25 gauge galvanized steel channels installed perpendicular to joists and spaced 16 in. on centers maximum. Additional channels required at gypsum wallboard end joints such that each board end rests on its own channel. These additional channels shall extend to the next joist on each side of the board edges. Channels fastened with 1-5/8 in. long Type W screws at each joist intersection.
6.	Gypsum Board: Two layers of 1/2 in. Type X gypsum wallboard. Base layer to be installed with long dimensions perpendicular to supports with end joints butted over supports and staggered 24 in. minimum. 1-1/8 in. Type S screws are spaced 12 in. on centers at the joints and in the field. Face layer installed with long dimension perpendicular to supports and edges, staggered 24 in. from base layer end joints. 1-5/8 in. Type S screws are placed minimum 12 in. on centers on intermediate supports, 1 1/2 in. Type W screws 8 in. on centers at butt joints.

Design Listing PWT WIJ 60-03

CSI Code 06 17 00
CSI Code 06 17 33

DESIGN NO. PWT/WIJ 60-03
ASSEMBLY RATING: 60 MINUTES
FLOOR/CEILING ASSEMBLY
FINISH RATING: 24 MINUTES

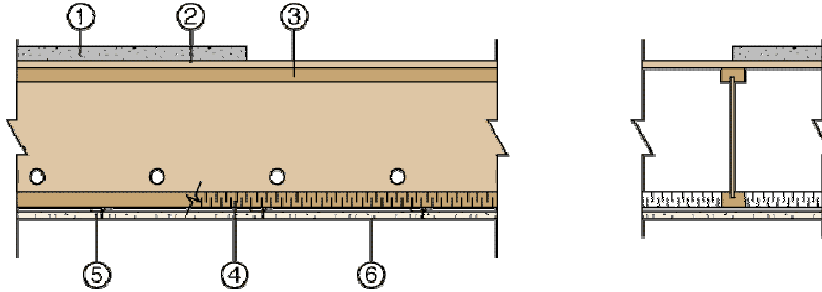


1.	Topping (Optional): Lightweight concrete or proprietary topping.
2.	Sub-Flooring: Minimum 5/8 in. plywood or oriented strandboard (OSB). Sub-flooring installed perpendicular to joists, with end joints staggered, fastened in accordance with Code requirements
3.	Structural Members: Pacific Woodtech Corporation PWI Series I-joists having a minimum depth of 9 1/2 in., installed at 24 in. on centers maximum.
4.	Resilient Channels: Minimum 25 gauge galvanized steel channels installed perpendicular to joists and spaced 16 in. on centers maximum. Additional channels required at gypsum wallboard end joints such that each board end rests on its own channel. These additional channels shall extend to the next joist on each side of the board edges. Channels fastened with 1-5/8 in. long Type W screws at each joist intersection.
5.	Gypsum Board: One layer of 5/8 in. Type C gypsum wallboard installed perpendicular to channels with end joints staggered 48 in. Boards to be fastened to channels with minimum 1-1/8 in. Type S screws located 7 in. on center. Screws shall be minimum 1-1/2 in. from board edges and 3/4 in. from board ends. Gypsum wallboard shall be taped and filled. Screw heads shall be filled with gypsum joint compound.
6.	Insulation: 2 in. rock wool insulation, nominal 3.5 pcf density, friction fit between flanges, resting on wood furring strips.
7.	Wood Furring Strip (not shown): Nominal 1 in. x 4 in. wood furring strip installed under each bottom flange, centered on flange, fastened with 1-1/4 in. Type W screws located 24 in. on centers.

Design Listing PWT WIJ 60-04

CSI Code 06 17 00
CSI Code 06 17 33

DESIGN NO. PWT/WIJ 60-04
ASSEMBLY RATING: 60 MINUTES
ROOF/CEILING ASSEMBLY



1.	Roof Covering System: Insulation and roof covering materials intended for built-up covering which provides Class A, B, or C covering on combustible wood decks for fire resistant assemblies equivalent to this assembly.
2.	Sheathing: Minimum 1/2 in. square edge plywood or oriented strandboard (OSB). Sheathing installed perpendicular to joists, with end joints staggered, fastened in accordance with Code requirements.
3.	Structural Members: Pacific Woodtech Corporation PWC Series I-joists having a minimum depth of 9 1/2 in., installed at 24 in. on centers maximum.
4.	Insulation: 1-1/2 in. rock wool insulation, nominal 2.5 pcf density, friction fit between flanges.
5.	Resilient Channels: Minimum 25 gauge galvanized steel channels installed perpendicular to joists and spaced 16 in. on centers maximum. Additional channels required at gypsum wallboard end joints such that each board end rests on its own channel. These additional channels shall extend to the next joist on each side of the board edges. Channels fastened with 1-5/8 in. long Type W screws at each joist intersection.
6.	Gypsum Board: One layer of 5/8 in. Type C gypsum wallboard installed perpendicular to channels with end joints staggered 48 in. Boards to be fastened to channels with minimum 1 1/8 in. Type S screws located 7 in. on center. Screws shall be minimum 1 1/2 in. from board edges and 3/4 in. from board ends. Gypsum wallboard shall be taped and filled. Screw heads shall be filled with gypsum joint compound.

Design Listing PWT WIJ 60-04 (page 2 of 2)

CSI Code 06 17 00
CSI Code 06 17 33